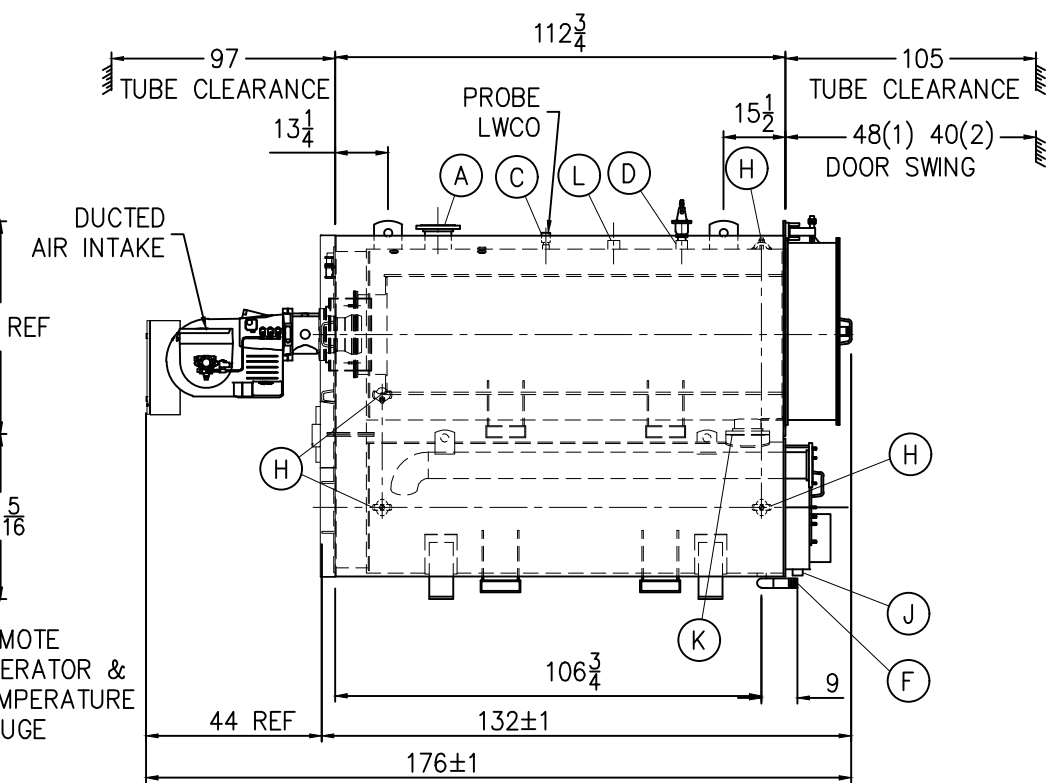
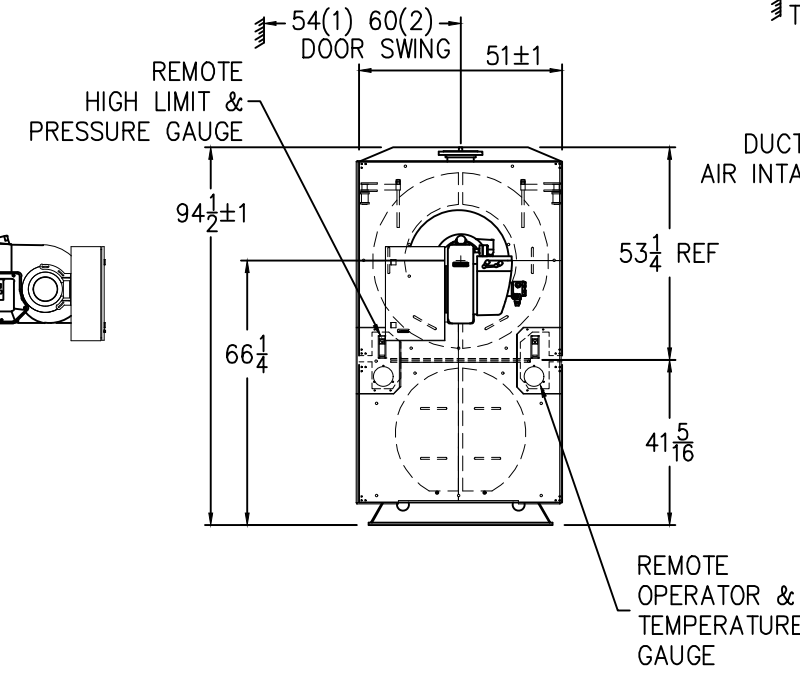
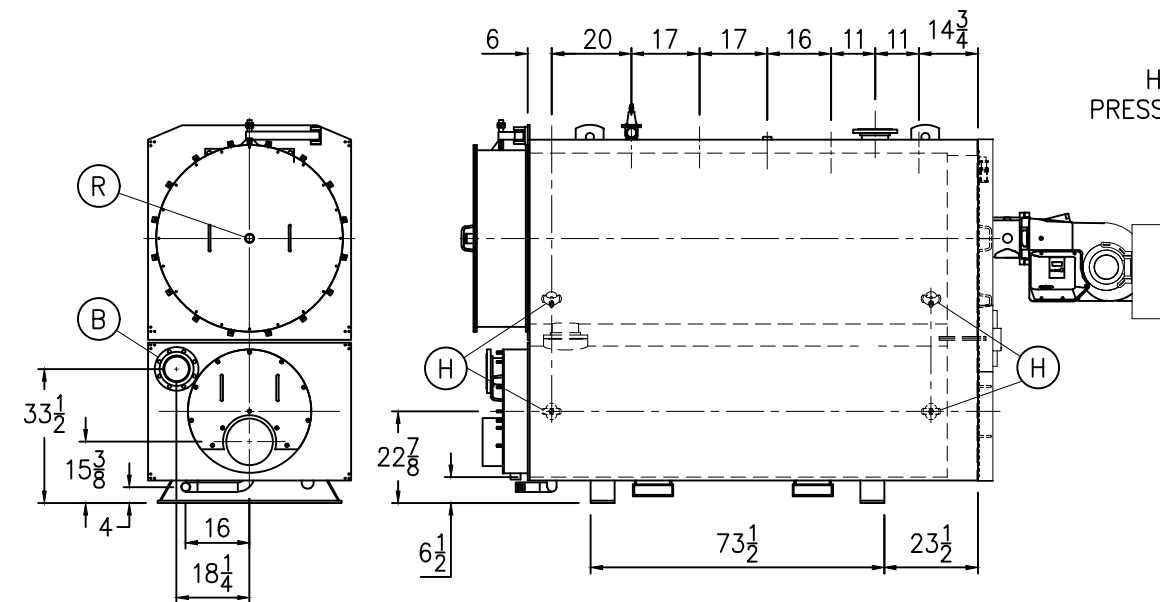


| BOILER CONNECTIONS | |
|------------------------|----------------|
| A.(1) WATER OUTLET | 6" 150# FLANGE |
| B.(1) WATER RETURN | 6" 150# FLANGE |
| C.(1) LWCO | 1" NPT |
| D.(1) SAFETY VALVE | 2" NPT |
| E.() SAFETY VALVE | |
| F.(1) BOILER DRAIN | 2" NPT |
| G.() WASHOUT | |
| H.(8) HANDHOLE | 3" x 4" |
| J.(1) CONDENSATE DRAIN | 1 1/2" NPT |
| K.(1) RISER/DOWNCOMER | 6" 150# FLANGE |
| L.(1) AUXILIARY/VENT | 2" NPT |
| M.() LOW FIRE HOLD | |
| N.() AQUASTAT | |
| P.(5) AQUASTAT | 3/4" NPT |
| Q.() STACK TEMP | |
| R.(1) SIGHT PORT | 2" NPT |
| S.(1) STACK | 12" ID |

| RATINGS & CAPACITIES | |
|-----------------------------|------------------|
| RATED INPUT | 6000 MBH |
| GROSS OUTPUT | 5700 MBH |
| DESIGN PRESSURE | 160 PSI WATER |
| DESIGN TEMPERATURE | 210 F |
| HEAT RELEASE (FURNACE ONLY) | 161,526 BTU/CuFt |
| HEAT SURFACE (ASME) | 566 SqFt |
| FURNACE HEATING SURFACE | 62.02 SqFt |
| FURNACE VOLUME | 37.15 CuFt |
| WATER VOLUME (FULL) | 480 GAL |
| WATER WEIGHT | 3,994 LBS |
| SHIPPING WEIGHT | 8,870 LBS |



- NOTES**
- 1) ALL CONTROLS MOUNTED AS PER SPECIFICATION SHEET.
 - 2) SPECIFICATION SHEET TAKES PRIORITY OVER R & D SHEET.
 - 3) BOILER DESIGN CODE ASME SECTION IV.
 - 4) ALL DIMENSIONS ARE ±1/2" UNLESS OTHERWISE NOTED.
 - 5) REAR DOOR SWING:
 - (1) MIN SIDE, MAX REAR
 - (2) MAX SIDE, MIN REAR
 - 6) TUBE CLEARANCE REQUIRED FROM ONE SIDE ONLY.
 - 7) AERCO RESERVES THE RIGHT TO MODIFY BOILER DIMENSIONS WITHOUT PRIOR NOTICE.

AERCO 100 ORITANI DRIVE BLAUVELT, NY 10913
A WATTS Brand aerco.com

MFC II 6000 MBH
DIMENSIONAL DRAWING

| | | |
|---------------------------------------|-----------|--------|
| DWN.BY <u>K.S.</u> DATE <u>011626</u> | AP-A-1109 | REV. B |
| SCALE <u>NTS</u> | | |
| REV.BY <u>K.S.</u> DATE <u>052626</u> | | |