

HEAT EXCHANGER				
ITEM	MODEL	PART NO.	QTY	DESCRIPTION
1	INN600	24319-1	1	PLATED HEAT EXCHANGER KIT
	INN800	24319-2	1	
	INN1060	24319-3	1	

DYNAMIC LOAD ANTICIPATOR ASSY				
ITEM	PART NO.	QTY	DESCRIPTION	
2	69103	1	CIRCULATOR-1" CRTG TACO 007-SF5-IFC	
3	59170	2	SHUT-OFF FREEDOM SWIVEL FLG 3/4" NPT	
4	92082	1	T&P RELIEF VALVE 1" NPT	
5	123449	3	TEMPERATURE SENSOR	
6	12870-1	1	VALVE, BALL 1" NPT [DRAIN]	

GAS TRAIN				
ITEM	PART NO.	QTY	DESCRIPTION	
(2) 7	22122	1	STD FM GAS TRAIN	
	22122-1	1	DBB GAS TRAIN	

EXHAUST MANIFOLD				
ITEM	PART NO.	QTY	DESCRIPTION	
8	44085	1	EXHAUST MANIFOLD	
9	61020	1	SENSOR, EXHAUST TEMPERATURE	

AIR FUEL DELIVERY SYTEM - BLOWER, A/F VALVE & ACCESS.				
ITEM	PART NO.	QTY	DESCRIPTION	
10	24111	1	BLOWER - AMETEK 8.9"	
11	24311-3	1	VALVE, AIR FUEL [NAT. GAS]	
12	59138	1	FILTER, 6" AIR	
13	61024	1	SENSOR, AIR INLET TEMP.	
14	60011-1	1	SWITCH ASSY - BLOWER PROOF	
15	61002-5	1	SWITCH - BLOCKED INLET 8.0" W.C.	

BURNER				
ITEM	PART NO.	QTY	DESCRIPTION	
16	46023	1	LOW NOx BURNER ASSY	
17	44086	1	LOW NOx BURNER MTG PLATE	

ENCLOSURE - BASE- ELECTRICAL PANEL				
ITEM	PART NO.	QTY	DESCRIPTION	
18	37094	1	FRONT PANEL ASSEMBLY	
19	37098	1	PANEL, TOP	
20	37097	1	PANEL, LEFT REAR	
21	37081	1	COVER, 1" PIPE	
22	37101	1	REAR PANEL, UPR RIGHT	
23	37102	1	ACCESS PANEL, RIGHT REAR	
24	37104	1	PANEL, RIGHT SIDE ZERO CLEARANCE	
25	37103	1	LOWER PANEL, RIGHT REAR	
26	37096	1	FRONT DOOR ASSEMBLY	
27	37099	2	PANEL, SIDE	
28	37063	1	PANEL, REAR LOWER	
29	30081	1	PANEL, BASE COVER	
30	34061	1	BASE, FORMED 26 X 40	
31	39144	1	RING ASSY, LOWER HEAD	
32	34063	2	LEG, BASE	
33	30090	1	PANEL, ELECTRICAL	

GASKETS / 'O'RINGS				
ITEM	PART NO.	QTY	DESCRIPTION	
34	18900	1	SEAL, MANIFOLD TO LWR HEAD	
35	122537	1	GASKET, EXH MANF TO COMB CHAMB	
36	18899	1	GASKET, BURNER FLANGE	
37	81136	1	GASKET, INTAKE MANIFOLD	
38	124749	1	GASKET, FIBRE FRAX	
39	81150	1	GASKET, FLAME ROD	
40	18532	2	GASKET, SHELL 1/16	
41	18556	1	GASKET, RELEASE	
42	GP-123077	1	LINER, UPPER HEAD	
43	81064	1	GASKET, BLOWER	
44	81057	1	GASKET, A/F VALVE	
(1) 45	88003	1	'O'-RING #2-339 [GAS TRAIN FLANGE]	
(1)(3) 46	88004	1	'O'-RING #2-244	

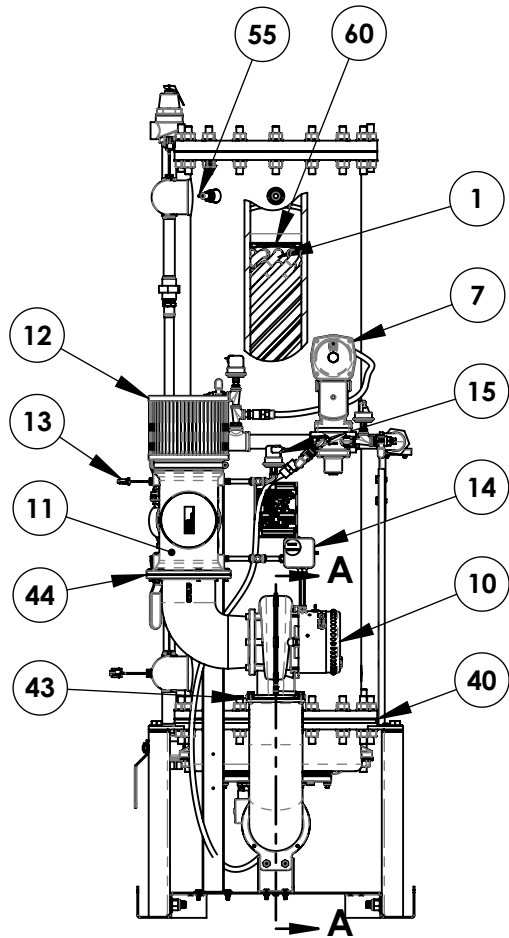
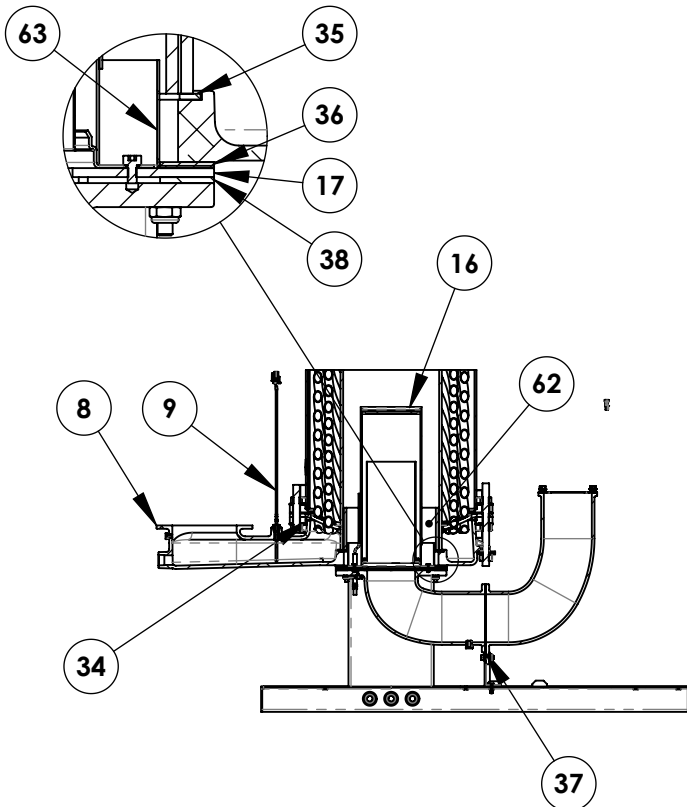
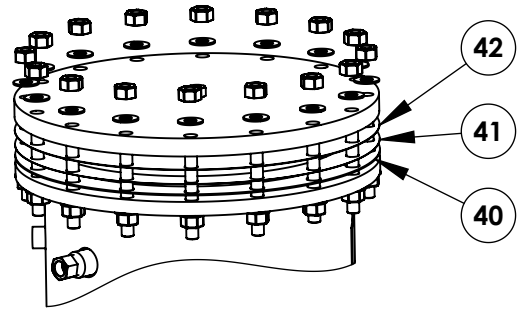
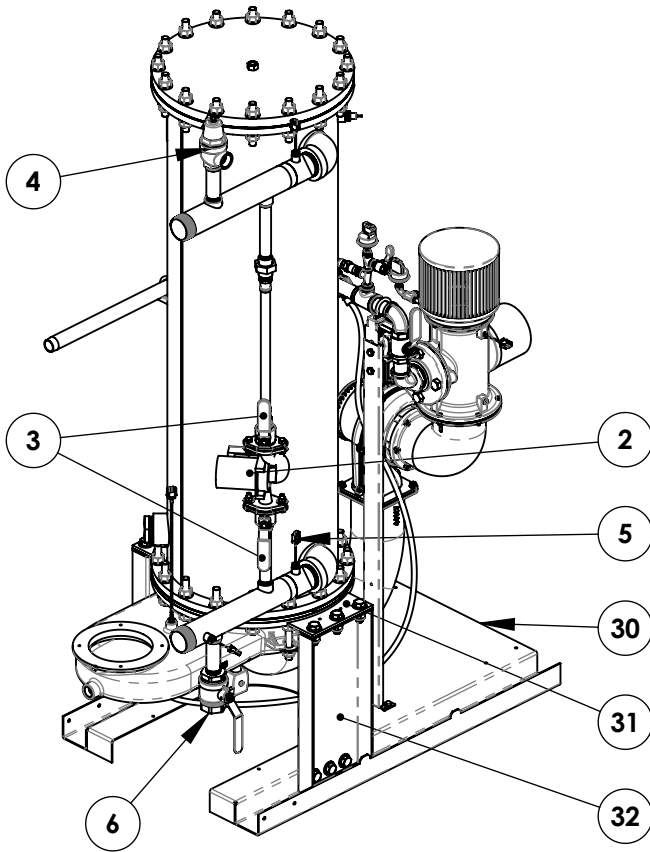
CONTROLS				
ITEM	PART NO.	QTY	DESCRIPTION	
47	64077	1	POWER BOX ASSEMBLY	
48	65085	1	TRANSFORMER. GAS IGNITOR	
(1) 49	65104	1	CABLE, HV IGNITION	
(1) 50	63072	1	HARNESS, SHELL WIRING	
(1) 51	63079	1	HARNESS, INNOVATION CONTROL	
52	161560	1	I/O WIRING BOX ASSEMBLY	
53	123552	1	SWITCH, OVER TEMP - MANUAL	
54	123966	1	SWITCH, OVER TEMP - AUTO	
55	122843	1	SENSOR, LOW WATER CUTOFF	
56	181197	1	C-MORE CONTROL BOX	
(1) 57	161450	1	HARNESS, GAS TRAIN MAIN WIRING [FM & DBB]	
(1) 58	124024	1	HARNESS, DBB GAS TRAIN	

OTHER PARTS				
ITEM	PART NO.	QTY	DESCRIPTION	
59	59133	5	LATCH, COMPRESSION	
60	32412-1	1	BAFFLE ASSY, HT EXCHANGER	
61	74018	1	INN600 LOGO LABEL	
	74019	1	INN800 LOGO LABEL	
	74020	1	INN1060 LOGO LABEL	
62	161151	1	LINER, COMBUSTION CHAMB	
63	49209	1	SHIELD, CONDENSATE	

NOTES:

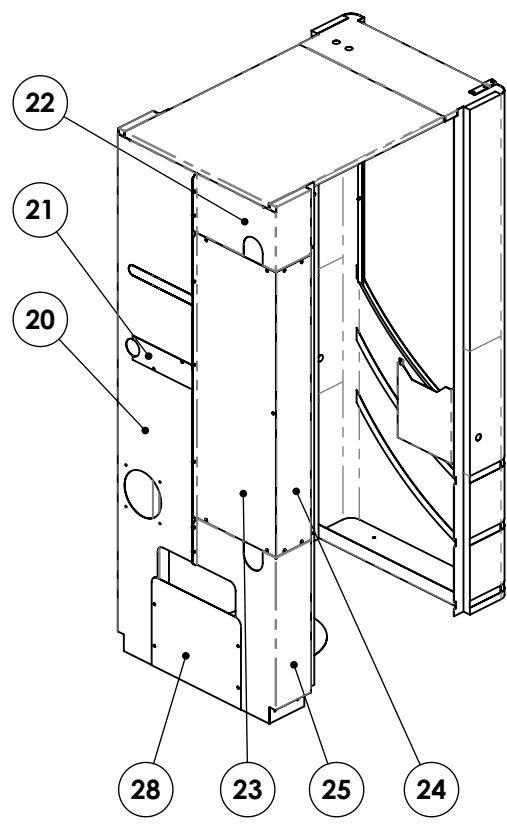
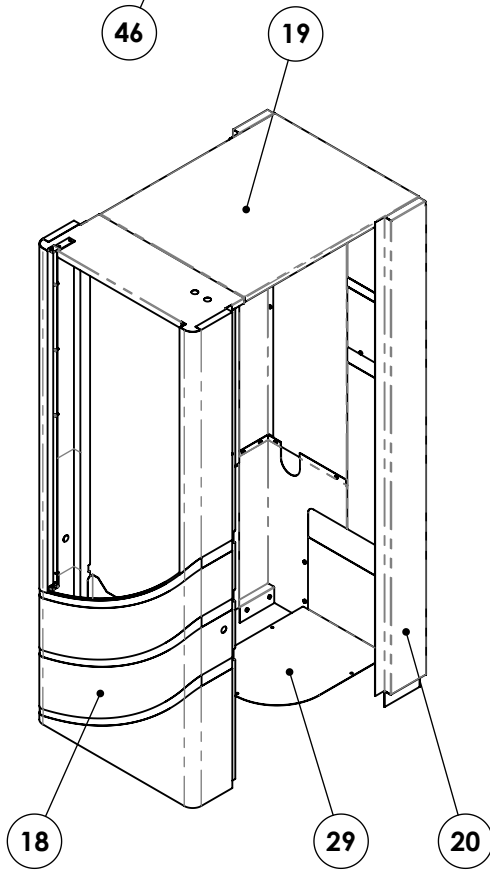
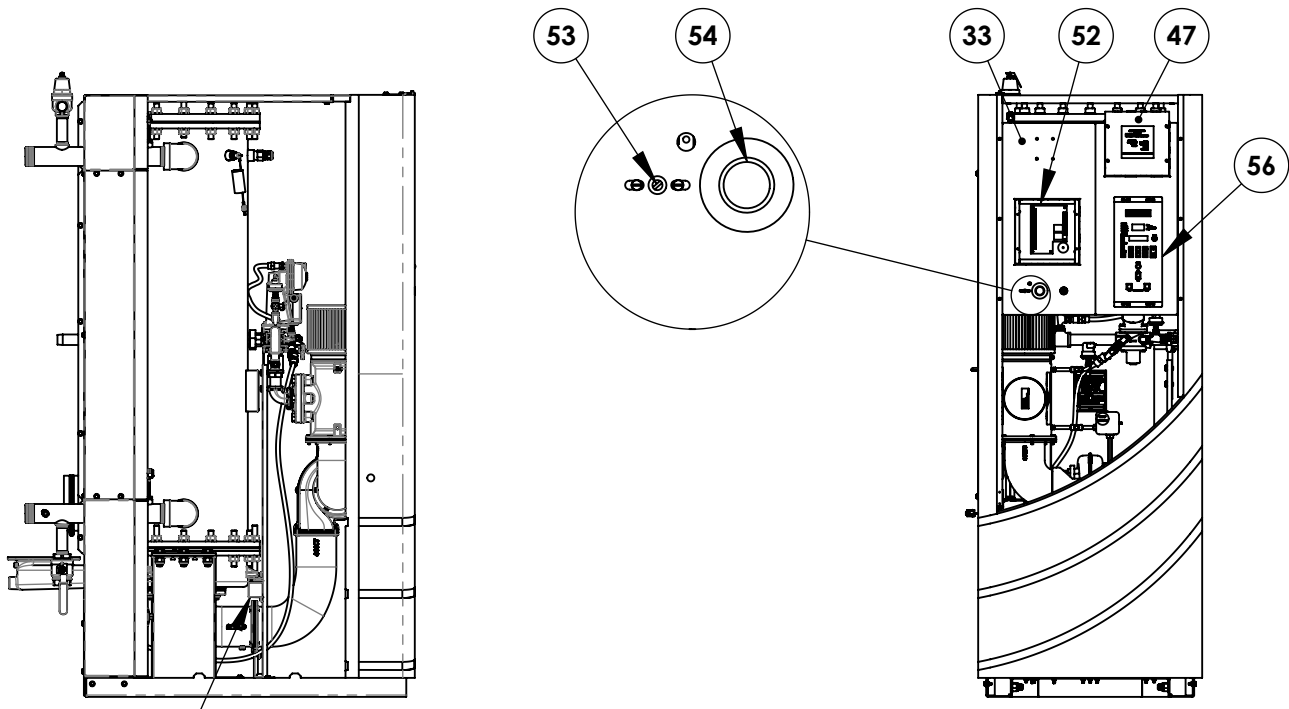
- (1) NOT SHOWN IN DRAWING
- (2) FOR PICTORAL PURPOSES ONLY, FM GAS TRAIN [NON DUAL FUEL] IS SHOWN.
- (3) SEE DRAWING **PL-A-164**


 <b>AERCO</b> INTERNATIONAL INC. Blauvelt, NY 10913	
<b>INNOVATION WATER HEATER PARTS LIST</b>	
DWNL BY C. Wms. DATE 6-2-11	DWG. NO. <b>PL-A-167</b>
SCALE _____ SIZE <b>A</b>	SHEET 1 OF 4
CHKD BY APPD _____	REV <b>A</b>

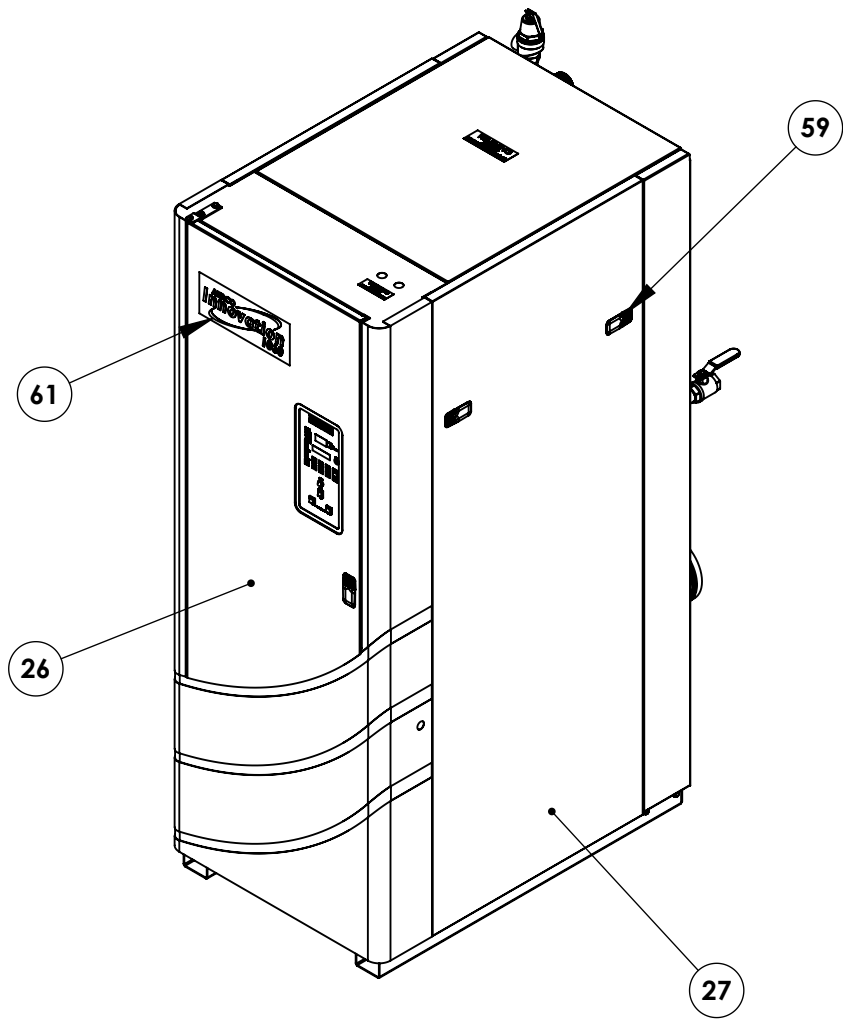


SECTION A-A

 INTERNATIONAL INC. Blauvelt, NY 10913	
<b>INNOVATION WATER HEATER</b> <b>PARTS LIST</b>	
DWN. BY: C. Wms DATE: 6-2-11 SCALE: NTS SIZE: CHD BY: APPD:	DWG. NO.: <b>PL-A-167</b> SHEET 2 OF 4
	REV <b>A</b>



 INTERNATIONAL INC. Blauvelt, NY 10913			
<b>INNOVATION WATER HEATER</b> <b>PARTS LIST</b>			
DWN. BY C.Wms.	DATE 6-2-11	DWG. NO. PL-A-167	REV A
SCALE NTS	SIZE	SHEET 3 OF 4	
CHD BY	APPD		



 INTERNATIONAL INC. <small>Blauvelt, NY 10913</small>	
<b>INNOVATION WATER HEATER PARTS LIST</b>	
DWN. BY: C. Wms. DATE: 6-2-11	DWG. NO.:
SCALE: NTS SIZE:	<b>PL-A-167</b>
CHD BY: APPD:	SHEET 4 OF 4
	REV <b>A</b>