

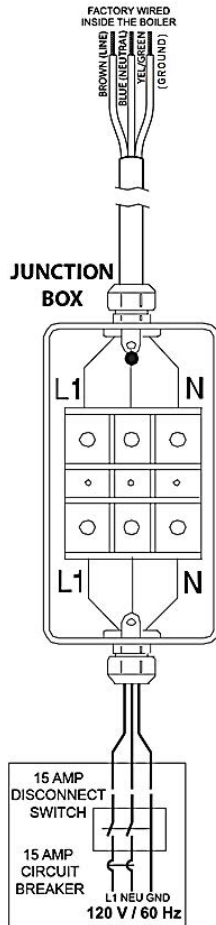
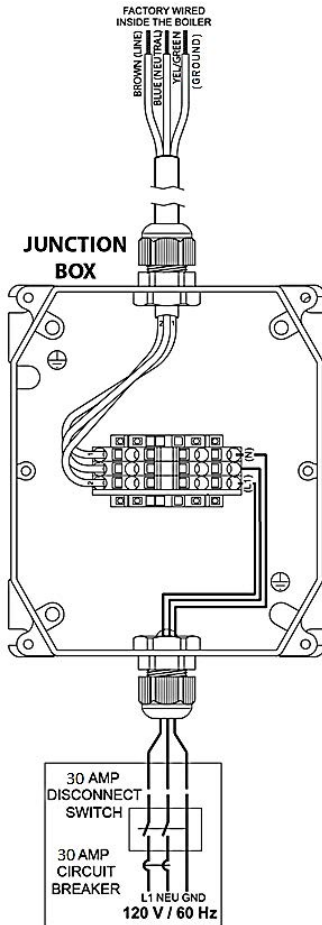


TECHNICAL APPLICATION GUIDE

ELECTRICAL POWER GUIDE

Modulux EXT Series

Modulating and Condensing Boilers



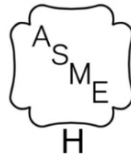
Modulux EXT

APPLIES TO MODELS:

- MLX EXT 321
- MLX EXT 481 / MLX EXT 450
- MLX EXT 641 / MLX EXT 600
- MLX EXT 802 / MLX EXT 800
- MLX EXT 962
- MLX EXT 1123 / MLX EXT 1100
- MLX EXT 1530 / MLX EXT 1500
- MLX EXT 1912
- MLX EXT 2295 / MLX EXT 2300
- MLX EXT 2677 / MLX EXT 2600
- MLX EXT 3060 / MLX EXT 3000

Latest Update: 02/22/2017

Technical Support
 1-800-526-0288
 (Mon-Fri, 8am-5pm EST)
www.aerco.com



DISCLAIMER:

The information contained in this manual is subject to change without notice from AERCO International, Inc. AERCO makes no warranty of any kind with respect to this material, including, but not limited to, implied warranties of merchantability and fitness for a particular application. AERCO International is not liable for errors appearing in this manual, nor for incidental or consequential damages occurring in connection with the furnishing, performance, or use of these materials

1. PROVISIONS FOR SERVICE

Designers must provide emergency shutoffs and other devices to satisfy electrical codes. It is also recommended to provide an electrical shutoff disconnect switch of suitable load carrying characteristics on or near **each** Modulex boiler. No electrical boxes or field components should be mounted to the surface of the boiler or where they would interfere with the removal of the side or top panels for maintenance. The disconnect switch should be mounted near the unit as illustrated in Figure 1. Wiring conduit, EMT, or other wiring paths should not be secured to the unit, but supported externally. Electricians should be instructed as to where the wiring conduit should be located, such as away from the relief valve discharge, drains, etc. All electrical conduit and hardware should be installed so that it does not interfere with the removal of any cover, inhibit service or maintenance, or prevent access between the unit and walls or another unit.

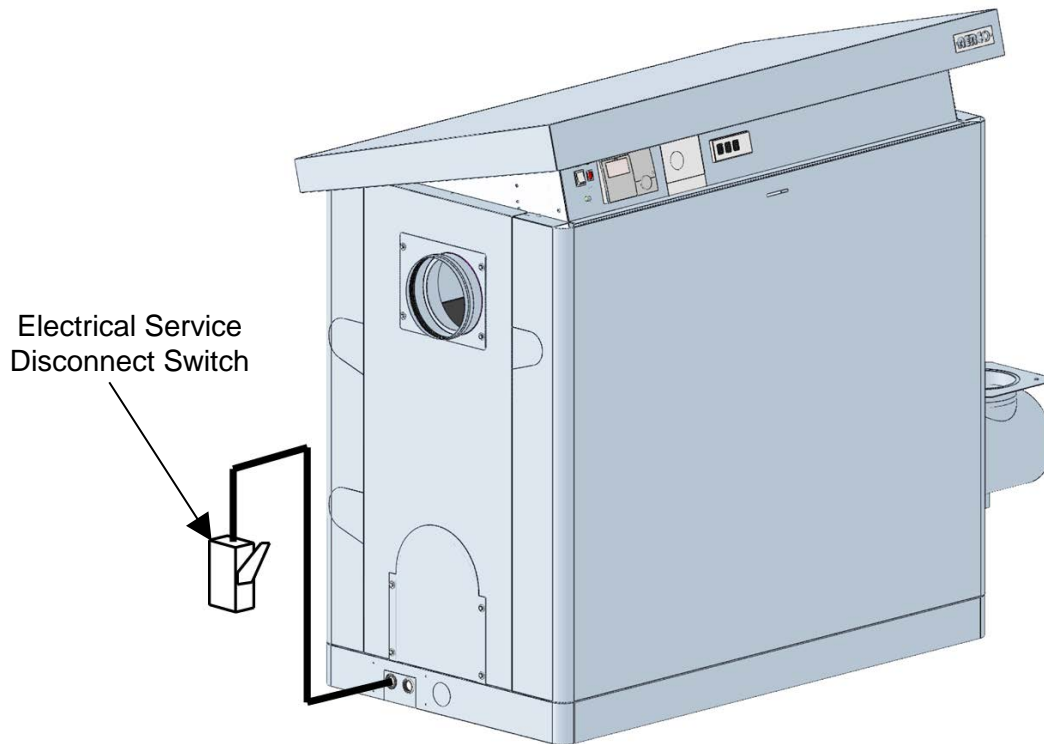


Figure 1: Service Switch Typical Location

2. SINGLE UNIT WIRING

When a single Modulex boiler is to be installed, a dedicated protected circuit should be provided from the power source to the boiler. No other electrical devices should be permanently wired on the same circuit. An emergency switch (electrical shutoff) must be in series with the power to the unit. Refer to **Figure 2**.

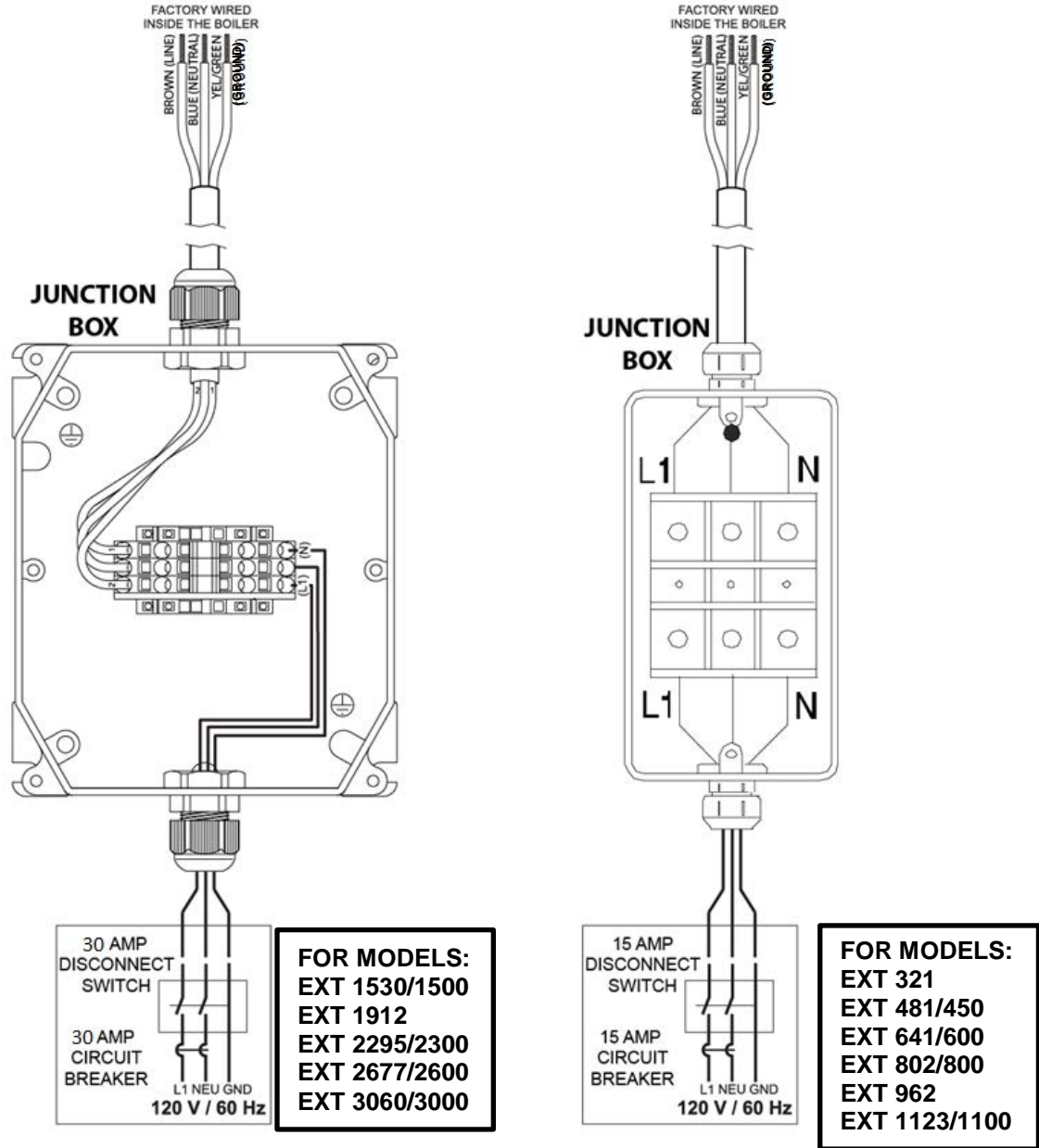


Figure 2: Modulex EXT Power Wiring Schematics

3. MULTIPLE UNIT WIRING

Whenever multiple units are installed within the same mechanical spaces, electrical code requirements call for a single electrical shutoff for emergency use. It is the responsibility of the electrical designer to comply with local codes and regulations affecting an individual installation.

CHANGE LOG:		
DATE	DESCRIPTION	CHANGED BY
10/14/2013	Rev-D: Corrected Power Wiring Junction Box Diagrams and removed 24V lines from Diagram.	Curtis Harvey
06/15/2015	Rec E: PIR 934-77: Added ASME certification mark, removed CSA certification mark, reversed Models label and changed amperage for models 1530 – 3060 from 15 to 30 in Figure 2.	Chris Blair
02/22/2017	Rev F: Added new model numbers for units with aluminum water connections and reformatted per new design standard.	Curtis Harvey



Copyright AERCO International Inc. 2017