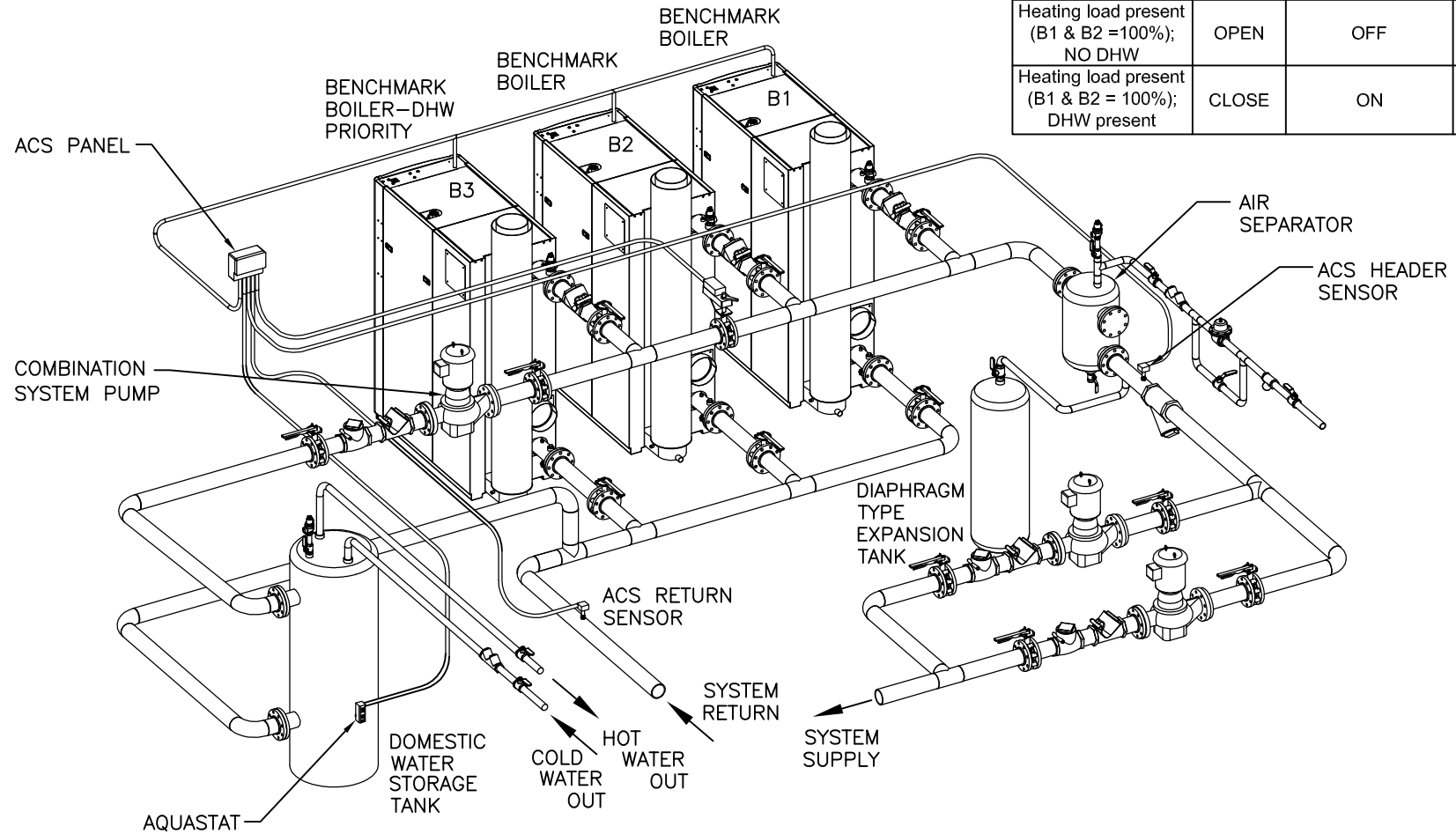


	V1	COMBINATION SYSTEM PUMP (NOTE 5)	B3 - DHW PRIORITY
Heating + DHW loads present	CLOSE	ON	CONSTANT SETPOINT
Heating load present (<100%); NO DHW	CLOSE	OFF	STANDBY
Heating load present (B1 & B2 =100%); NO DHW	OPEN	OFF	HEATING MODE
Heating load present (B1 & B2 = 100%); DHW present	CLOSE	ON	CONSTANT SETPOINT



NOTES:

1. SEE COMBINATION HEATING/DOMESTIC WATER HEATING APPLICATIONS GUIDE TAG-0050 AND WIRING DIAGRAM SD-A-884 FOR COMPLETE APPLICATION AND CONTROLS DETAILS.
2. THE ABOVE DIAGRAM DEPICTS THE COMBINATION HEATING/DOMESTIC WATER PIPING ONLY. FOR GAS PIPING AND THE REST OF THE WATER-SIDE PIPING DETAILS, SEE APPROPRIATE BENCHMARK BOILER PIPING SCHEMATIC.
3. FOR ACTUAL SIZES AND LOCATIONS OF PIPING AND OTHER CONNECTIONS TO THE BOILER, SEE APPROPRIATE BENCHMARK BOILER DIMENSIONAL DRAWING.
4. THIS IS A TYPICAL INSTALLATION DRAWING. LOCAL CODES AND AUTHORITIES SHOULD BE CONSULTED.
5. THE COMBINATION SYSTEM PUMP MUST BE ENABLED/DISABLED BY BUILDING CONTROLS.

AERCO INTERNATIONAL, INC. <small>Blauvelt, NY 10913</small>	
BENCHMARK BOILER – COMBINATION HEATING/DOMESTIC HOT WATER PIPING – DESIGNATED DHW BOILER APPLICATIONS WITHOUT ACS RELAY BOX	
DWN. BY <u>K.S.</u> DATE <u>121812</u> SCALE <u>NTS</u> APPD. _____ DATE _____	SD-A-915
	REV. B