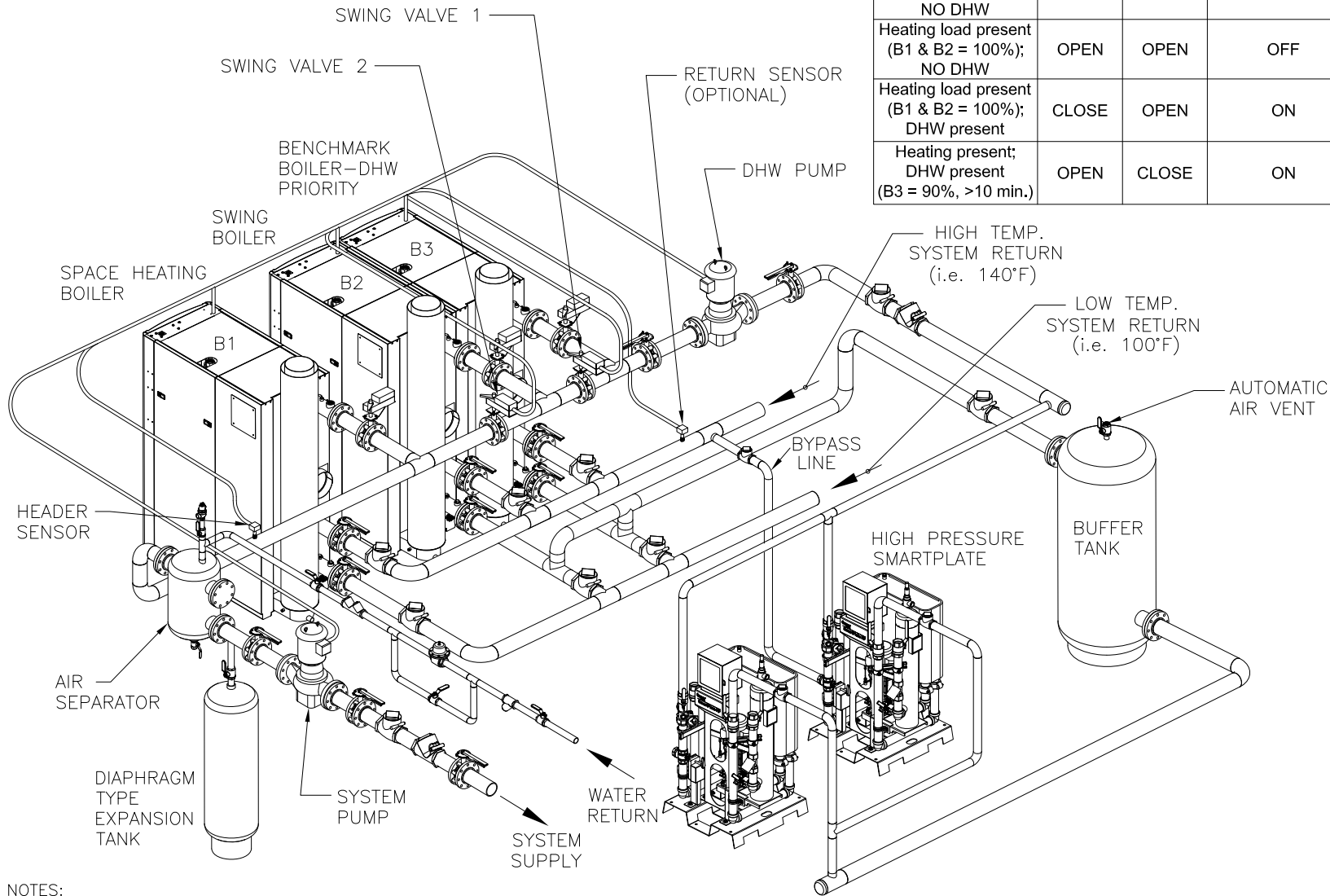


	SWING VALVE 1	SWING VALVE 2	DHW PUMP	B2 - BLDG (SWING)	B3 - DHW
Heating + DHW loads present	CLOSE	OPEN	ON	HEATING MODE	CONSTANT SETPOINT
Heating load present (<100%); NO DHW	CLOSE	OPEN	OFF	HEATING MODE	STANDBY
Heating load present (B1 & B2 = 100%); NO DHW	OPEN	OPEN	OFF	HEATING MODE	HEATING MODE
Heating load present (B1 & B2 = 100%); DHW present	CLOSE	OPEN	ON	HEATING MODE	CONSTANT SETPOINT
Heating present; DHW present (B3 = 90%, >10 min.)	OPEN	CLOSE	ON	CONSTANT SETPOINT	CONSTANT SETPOINT



NOTES:

- SEE COMBINATION HEATING/DOMESTIC WATER HEATING APPLICATIONS GUIDE TAG-0050 AND WIRING DIAGRAM SD-A-1179 FOR COMPLETE APPLICATION AND CONTROLS DETAILS.
- THE ABOVE DIAGRAM DEPICTS THE COMBINATION HEATING/DOMESTIC WATER PIPING ONLY. FOR GAS PIPING AND THE REST OF THE WATER-SIDE PIPING DETAILS, REFER TO APPROPRIATE BENCHMARK BOILER INSTALLATION DRAWINGS.
- FOR SIZES AND LOCATIONS OF PIPING AND OTHER CONNECTIONS TO THE BOILER, SEE APPROPRIATE BENCHMARK BOILER DIMENSIONAL DRAWING.
- REFER TO SMARTPLATE INSTALLATION DRAWINGS FOR RECOMMENDED DOMESTIC PIPING INSTALLATION: SD-A-1171, SD-A-1172, SD-A-1173, SD-A-1181, SD-A-1182, SD-A-1183, SD-A-1184
- BOILER PUMP MUST BE SIZED TO PROVIDE THE APPROPRIATE FLOW AT THE DESIGN ΔT OF BOILER PLANT. BOILER PUMP MUST MAINTAIN BENCHMARK BOILER(S) REQUIRED MINIMUM FLOW.
- THIS IS A TYPICAL INSTALLATION DRAWING. LOCAL CODES AND AUTHORITIES SHOULD BE CONSULTED.
- THE COMBINATION SYSTEM PUMP IS CONTROLLED BY EDGE, AS PER REFERENCE DRAWING SD-A-1179.
- MODULATING BOILER VALVES CAN BE USED FOR SINGLE POINT BALANCING.

 A WATTS Brand	100 ORITANI DRIVE BLAUVELT, NY 10913 aerco.com	
	BENCHMARK® PLATINUM W/ EDGE & BOILER/SMARTPLATE COMBINATION PLANT WITH MODULATING ISOLATION VALVES & TWO SWING VALVES PIPING APPLICATION	
DWN. BY <u>K.S.</u> DATE <u>061119</u>	SD-A-1188	REV.
SCALE <u>NTS</u>		B
REV. BY <u>K.S.</u> DATE <u>090919</u>		