

**SPECIFICATIONS**

FLOAT AND THERMOSTATIC

BODY AND COVER: CAST IRON 30,000 PSI TENSILE

VALVE PIN AND SEAT: STAINLESS STEEL (HARDENED)

FLOAT: STAINLESS STEEL

LEVER ASSEMBLY: STAINLESS STEEL

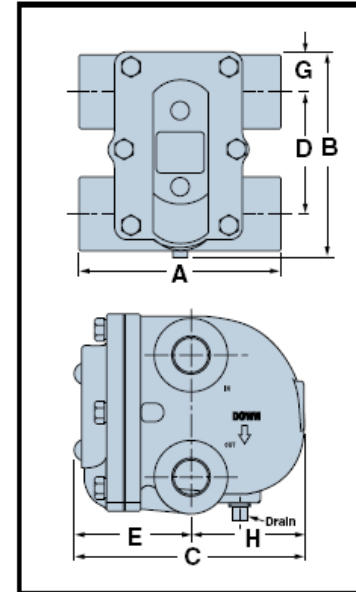
THERMOSTATIC AIR VENT: STAINLESS STEEL CAGE AND THERMAL ELEMENT

COVER BOLTS: GRADE 5

99136-10

**DIMENSIONS in (mm)**

PART #	CONNECTION SIZE (IN.)	A	B	C	D	E	G	H	WEIGHT LBS (KG)
99136-10	3/4	5-1/2 (140)	5-19/32 (142)	6-1/2 (165)	3-5/16 (84)	3-13/32 (86)	1-5/64 (27)	3-1/16 (78)	12 (5.4)



**Capacities (Gross Ratings)**

PART #	CONNECTION SIZE in.	ORIFICE SIZE in. (mm)	Pressure Differential in Pounds Per Square Inch (bar)	
			1/4 (0.017)	1/2 (0.035)
			Capacities in Pounds of Condensate Per Hour (kg/hr)	
99136-10	3/4	.235 (6)	380 (172)	470 (214)

**Note:**

- Maximum steam inlet pressure = 30 PSIG.

**IMPORTANT:**

- Discharge piping from the steam trap must drain by gravity/downhill to atmosphere or vented receiver.
- Do NOT drain to condensate return system or any system that will cause lift/backpressure.

**AERCO INTERNATIONAL, INC.**  
NORTHVALE, NJ 07647

VALVE TRAP / DRIP TRAP 30 PSI  
FLOAT AND THERMOSTATIC

DWN.BY\_CZ DATE\_093010  
SCALE \_\_\_\_\_ SIZE \_\_\_\_\_  
CHKD. \_\_\_\_\_ APPD. \_\_\_\_\_  
REV. DATE \_\_\_\_\_

AP-A-885

REV.

A