

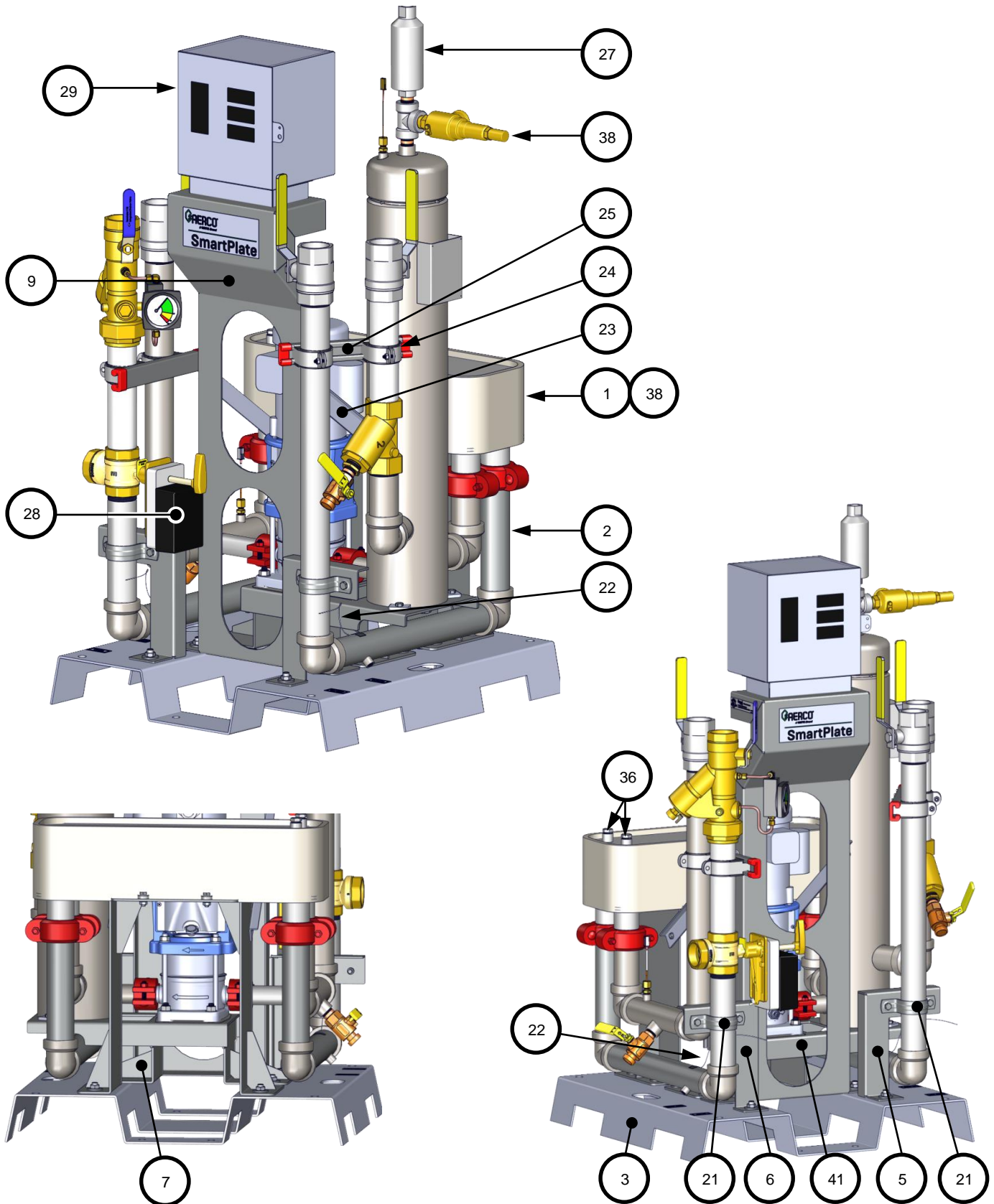
## APPENDIX E – Part List

| Item | Description          | SmartPlate–HP Model |          |          |          |          |
|------|----------------------|---------------------|----------|----------|----------|----------|
|      |                      | SPDW-38             | SPDW-54  | SPDW-72  | SPDW-116 | SPDW-175 |
| 1    | Heat Exchanger       | 28727-1             | 28727-2  | 28727-3  | 28727-4  | 28727-5  |
| 37 * | Eurotherm Clone File | 69017-29            | 69017-30 | 69017-31 | 69017-32 | 69017-33 |
| 38 * | HX Insulation Kit    | 80104-1             | 80104-2  | 80104-3  | 80104-4  | 80104-5  |
| 39   | Relief Valve         | 92314-3             | 92314-3  | 92314-4  | 92314-4  | 92314-4  |

| Item | Qty. | Part # | Description   |
|------|------|--------|---|
| 2    | 1    | 22340  | Piping Assembly, 2" NPT (See diagram and part list below) |
| 3    | 1    | 34110  | Base, SmartPlate  |
| 4 *  | 1    | 39228  | Heat Exchanger Support                                    |
| 5    | 1    | 33271  | Pipe Clamp Bracket, Right                                 |
| 6    | 1    | 33272  | Pipe Clamp Bracket, Left                                  |
| 7    | 1    | 39227  | Pump Support  |
| 8 *  | 2    | 36109  | Spacer Plate  |
| 9    | 1    | 39226  | Mounting Bracket, Control Box                             |
| 10 * | 12   | 55044  | Bolt, Carriage 1/2-13 X 1.00 LG                           |
| 11 * | 12   | 124413 | 1/2 - 13 Hex Nut  |
| 12 * | 12   | 123624 | Washer, Flat 1/2"   |
| 13 * | 8    | 6-311  | Bolt, Hex 3/8-16 X 1.00 LG                                |
| 14 * | 4    | 123614 | Washer, Flat 3/8  |
| 15 * | 6    | 56004  | Nut, Flanged Serrated 3/8-16                              |
| 16 * | 8    | 123626 | 1/4" Bolt Size Flat Washer, Zinc Plated                   |
| 17 * | 4    | 122531 | Nut, Flange Serrated 1/4-20                               |
| 18 * | 4    | 122371 | 1/4-20 X 1" LG HEX HD. MACHINE SCREW                      |
| 19 * | 4    | 56087  | Flange Nut, 1/2-13  |
| 20 * | 4    | 54161  | Flange Head Cap Screw, 1/2-13 x 1-3/4"                    |
| 21 * | 2    | 50020  | Pipe Clamp, 2" NPT Pipe                                   |
| 22   | 2    | 61018  | Thermocouple-Type J                                       |
| 23   | 2    | 35053  | Stiffener   |
| 24   | 4    | 50021  | Strut-Mount Clamp   |
| 25   | 2    | 33110  | Channel, Strut  |
| 26   | 4    | 59259  | End Cap, Strut Channel                                    |
| 27 * | 1    | 92130  | Valve, Air Bleeder 3/4" NPT 200 PSIG                      |
| 28   | 1    | 69343  | Actuator, Neptonic 3 Sec.                                 |
| 29   | 1    | 69096  | Control Box Assembly                                      |
| 30 * | 4    | 54061  | Screw, Pan Head w/Internal Washer 1/4-20 UNC X 3/4" LG    |
| 31 * | 1    | 74046  | Logo, SmartPlate  |
| 32 * | 1    | 72010  | Labels, Control Box                                       |
| 33 * | 1    | 79070  | Labels, SmartPlate  |
| 34 * | 1    | 73092  | Plate, Rating SmartPlate 300 PSI                          |
| 35 * | 1    | 79054  | UL Classified NSF/ANSI 372 Rating Label                   |
| 36   | 3    | 93615  | 1/2" NPT Hex Head Plug                                    |
| 40 * | 2    | 90147  | Close Nipple, 3/4" NPT Sch. 80 Red Brass                  |
| 41 * | 1    | 93619  | Tee, 3/4" NPT   |
| 44   | 1    | 39230  | Top Bracket   |

\* No callout on next page

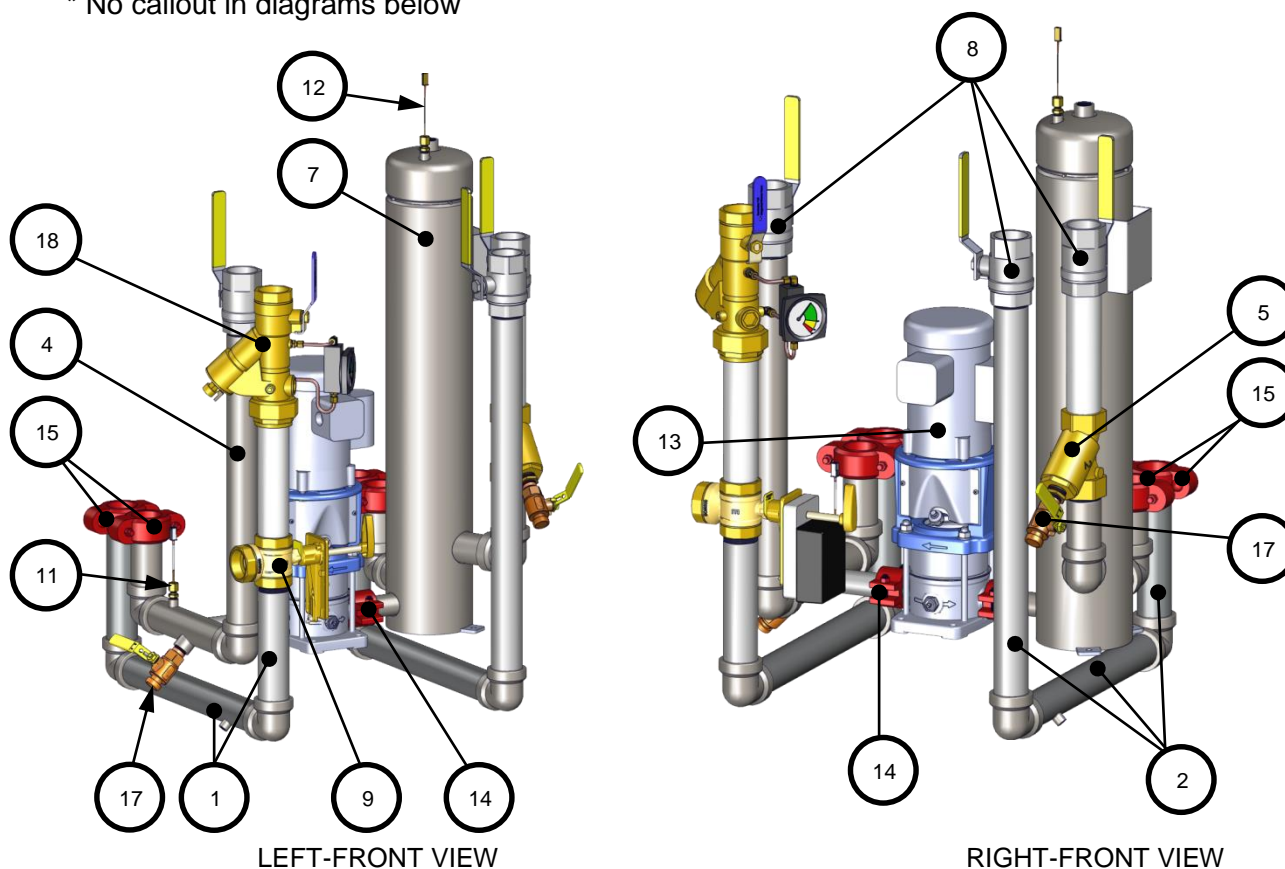
|  |                                |              |
|--|--------------------------------|--------------|
| AERCO<br>International, Inc.<br>Blauvelt, NY 10913 | <b>SmartPlate–HP Part List</b> | 01/15/2019   |
|  | <b>29455-TAB rev A</b>         | Sheet 1 of 2 |



|  |  |                                |
|--|--|--------------------------------|
| AERCO<br>International, Inc.<br>Blauvelt, NY 10913 | <b>SmartPlate–HP Part List</b><br><br><b>29455-TAB rev A</b> | 01/15/2019<br><br>Sheet 2 of 2 |
|--|--|--------------------------------|

| SmartPlate–HP Piping Assembly P/N 22340 |      |          |  |
|---|------|----------|--|
| Item                                    | Qty. | Part #   | Description  |
| 1                                       | 1    | 22336-1  | 2" Boiler Inlet Manifold                               |
| 2                                       | 1    | 22336-2  | 2" Boiler Outlet Manifold                              |
| 3 *                                     | 2    | 90147    | Close Nipple, 3/4" NPT Sch. 80 Red Brass               |
| 4                                       | 1    | 22335    | 2" DW, Outlet Manifold                                 |
| 5                                       | 1    | 93514-2  | Strainer 2" NPT, Wye-Pattern, Lead Free Bronze         |
| 6 *                                     | 1    | 93505    | Hex Reducing Bushing, 1" MNPT x 3/4" FNPT              |
| 7                                       | 1    | 22352    | Mixing Chamber   |
| 8                                       | 3    | 92107    | Ball Valve, 2" NPT Lead Free                           |
| 9                                       | 1    | 97148    | Characterized Control Valve, 2" NPT                    |
| 10 *                                    | 2    | 93029    | 1/4" MNPT x 3/16" OD Compression Fitting               |
| 11                                      | 1    | 61008-1  | Thermocouple, Dual Element                             |
| 12                                      | 1    | 61009-3  | Thermocouple, Single Element, 12" Probe                |
| 13                                      | 1    | 69339    | Circulator Pump, 300 PSI                               |
| 14                                      | 2    | 93604    | 1-1/4" Rigid Coupling Victaulic                        |
| 15                                      | 4    | 93159    | Coupling, Quik Flex 2"                                 |
| 16 *                                    | 2    | 90046-10 | Nipple, 2" NPT 304 SS Sch 40, 10" LG                   |
| 17                                      | 2    | 92128    | Full Ball Port Valve, 3/4" NPT x 3/4" Hose             |
| 18                                      | 1    | 22272-3  | Ball Valve & Strainer Combo, 2" NPT w/ DP Gage 300 PSI |

\* No callout in diagrams below

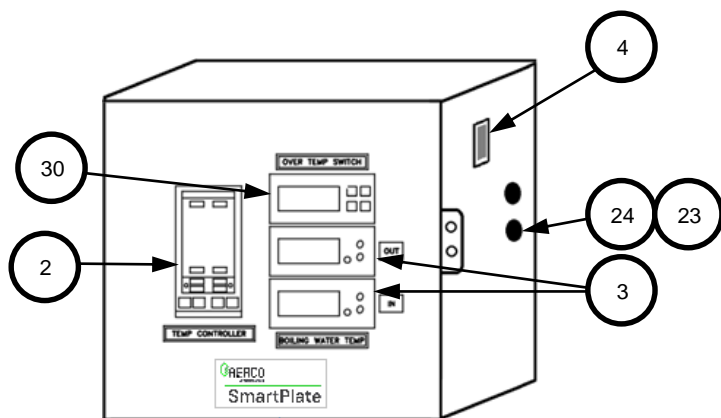


|  |                                  |              |
|--|----------------------------------|--------------|
| AERCO<br>International, Inc.<br>Blauvelt, NY 10913 | <b>Piping Assembly Part List</b> | 01/15/2019   |
|  | <b>22340 rev A</b>               | Sheet 1 of 1 |

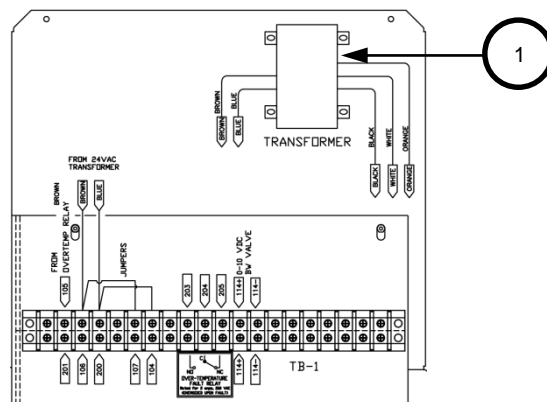
APPENDIX E – PART LISTS

| Model   | Programmed Control Box | Item 1      |                      |
|---------|------------------------|-------------|----------------------|
|         |                        | Part Number | Description          |
| SPDW38  | 28047-32               | 69096       | Control Box Assembly |
| SPDW54  | 28047-33               |             |                      |
| SPDW72  | 28047-34               |             |                      |
| SPDW116 | 28047-35               |             |                      |
| SPDW175 | 28047-36               |             |                      |

| Control Box Assembly – P/N 69096                           |     |          |   |
|--|-----|----------|---|
| Item #   | Qty | Part #   | Description                                   |
| 1  | 1   | 65082    | TRANSFORMER, X075CBA, 120/240 TO 24 VAC       |
| 2  | 1   | 64028-29 | TEMPERATURE INDICATOR CONTROLLER - SPDW38     |
|  |     | 64028-30 | TEMPERATURE INDICATOR CONTROLLER: SPDW54      |
|  |     | 64028-31 | TEMPERATURE INDICATOR CONTROLLER: SPDW72      |
|  |     | 64028-32 | TEMPERATURE INDICATOR CONTROLLER: SPDW116     |
|  |     | 64028-33 | TEMPERATURE INDICATOR CONTROLLER: SPDW175     |
| 3  | 2   | 64056    | BOILER WATER TEMPERATURE INDICATOR            |
| 4  | 1   | 60003    | ON/OFF SWITCH                                 |
| * 15   | 1   | 63009-3  | EXTERNAL HARNESS (COMPLETE HARNESS)           |
| THE FOLLOWING PART NUMBERS ARE SUB-COMPONENTS OF 63009-3:  |     |          |   |
| *  | 1   | 63009-52 | HOT WATER OUT-TO-TEMP CTRL. WIRING HARNESS    |
| *  | 1   | 63009-53 | HOT WATER OUT-TO-OVER TEMP SW. WIRING HARNESS |
| *  | 1   | 63009-55 | BOILER WATER IN WIRING HARNESS                |
| *  | 1   | 63009-57 | BOILER WATER OUT WIRING HARNESS               |
| *  | 1   | 63009-58 | MIXED INLET TEMP WIRING HARNESS               |
| *  | 1   | 63009-61 | RECIRCULATION PUMP WIRING HARNESS             |
| *  | 1   | 63009-64 | CONTROL VALVE WIRING HARNESS                  |
| THE FOLLOWING PART NUMBERS ARE SUB-COMPONENTS OF 63009-64: |     |          |   |
| *  |     | 63009-62 | ACTUATOR SIGNAL WIRING HARNESS                |
| *  |     | 63009-63 | ACTUATOR POWER WIRING HARNESS                 |
| 23   | 1   | 65094-2  | FUSE, 10 A                                    |
| 24   | 1   | 65095    | FUSE HOLDER                                   |
| 30   | 1   | 60014    | OVER TEMPERATURE SWITCH                       |
| * NOT SHOWN IN DRAWING                                     |     |          |   |



CONTROL BOX



INSIDE VIEW OF BACK PANEL OF CONTROL BOX

|   |   |              |
|---|---|--------------|
| AERCO International, Inc.<br>Blauvelt, NY 10913 | <b>Programmed Control Box Part List</b> | 01/15/2019   |
|   | <b>28047-TAB rev J</b>                  | Sheet 1 of 1 |