



BOILER VALVE CONTROLLER

TECHNICAL DATA SHEET

AERCO Boiler Valve Controller

FEATURES

- ✓ 4-Boiler and 12-Boiler Valve Controllers Available
- ✓ For use with AERCO Benchmark and KC1000 Boilers
- ✓ User-Friendly PLC Control for Easy Set-Up
- ✓ 3" High Contrast Digital Display / Touchscreen
- ✓ Valve Closure Time Delay Function
- ✓ Valve Position Over-ride
- ✓ NEMA Type 4X Fiberglass Enclosure (For Indoor Use Only)



DESCRIPTION

Designed for variable flow heating systems, the AERCO Boiler Valve Controller automatically sequences each motor operated valve* (MOV) — reducing the system’s minimum flow requirement to a single boiler’s minimum flow. For example, a four BMK2.0LN installation without MOV requires $4 \times 25 = 100$ gpm minimum system flow, while the same installation with MOVs and the AERCO Boiler Valve Controller will only require 25 gpm minimum system flow. When system demand is satisfied, the Boiler Valve Controller opens all MOVs, preventing system pump dead head conditions.

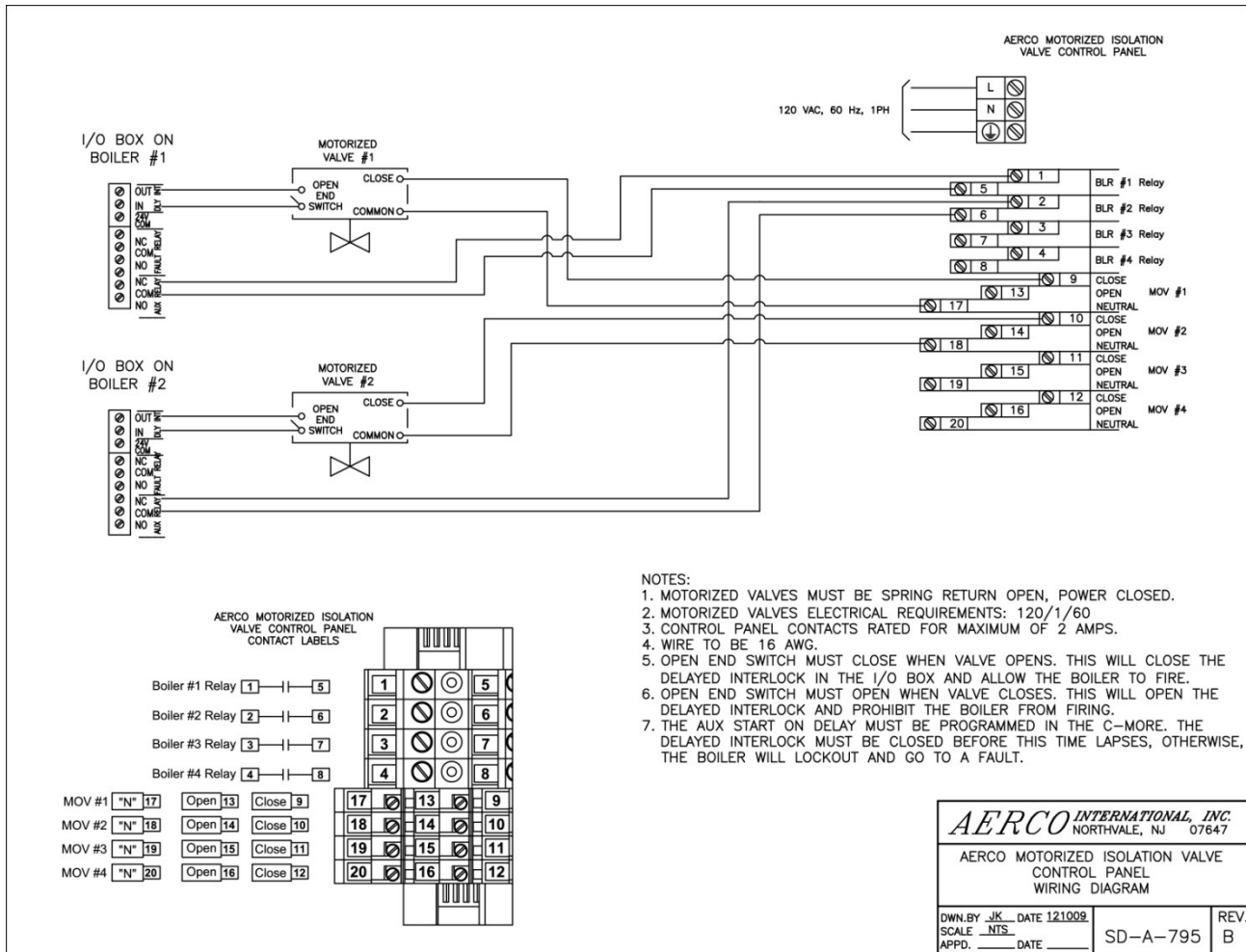
A time delay function (default = 2 minutes; programmable up to 30 minutes) allows residual heat to be absorbed into the heating system prior to closing the boiler isolation valve, eliminating nuisance temperature faults of isolated boilers. The position of any MOV can be selected using the “Valves” Screen (if a boiler is firing, the corresponding valve cannot be moved to the “CLOSED” position to avoid temperature overshoot).

The AERCO Boiler Valve Controller operates independently from the AERCO Boiler Management System.



*Separate boiler isolation valves shall be supplied – consult local codes when using motorized operated valves with manual mechanical override in lieu of separate manual isolation valves.

FIELD WIRING DIAGRAM



INSTALLATION NOTES

1. Motorized valves must be spring return open, power closed.
2. Nonmetallic Enclosure does not provide grounding between conduit connections. Use grounding bushings and jumper wires.
3. Use 75° Copper Conductors only.

SPECIFICATIONS

Dimensions	(4-Boiler) 11.8"W x 13.5"H x 6.3"D (12-Boiler) 13.9"W x 15.5"H x 6.3"D
Weight	(4-Boiler) 10lbs (12-Boiler) 14lbs
Power Supply Required	120VAC/60Hz, 15 Amp
Maximum Valve Load	(Power to Close) 1 Amp
Enclosure	NEMA Type 4X (For Indoor Use Only)

Standard Listing and Approvals UL Listed

PART NUMBERS

Boiler Valve Controller Model	Part Number
4-Boiler Model	64064
12-Boiler Model	64065

Represented by:

Specifications subject to change.
Consult www.aerco.com or call AERCO for information.

New Doc 5/10



AERCO INTERNATIONAL, INC. • 159 PARIS AVENUE
NORTHVALE, NJ 07647-0128 • (201) 768-2400 • FAX (201) 768-7789
www.aerco.com • E-mail: info@aerco.com

